

# Beta 85

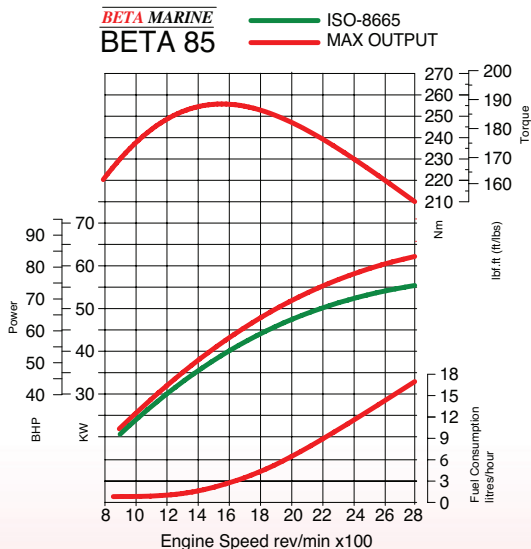
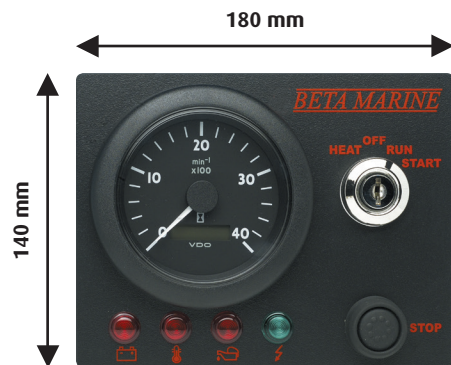
4 Cylinders - 83bhp max at 2,800 rev/min - Weight 359kg



## Standard Specification

Beta Marine - Beta 85 - 4 cylinder, turbocharged marine diesel propulsion engine developing 83 bhp at 2,800 rpm with a swept volume of 3331 cc. The engine is supplied complete with a heat exchanger/header tank, water cooled exhaust manifold, lagged turbocharger, fresh and sea water pumps, stainless steel injection bend, mechanical fuel lift pump, fuel filter with hand primer, oil filter, special quiet air intake filter, 12 volt starter, 70 amp alternator, control panel "ABV" with a 3m interconnection cable to engine harness and shutdown solenoid. Gearbox with nominal 2:1 reduction, heavy duty engine feet with flexible mountings, "Morse" type end fittings for speed and gear control, engine test certificate, operator's manual. Red paint and packed on skid base with a 5 year "Self Service" warranty.

## Standard 'ABV' Control Panel



Fuel consumption based on theoretical  
propeller loading - matched at full speed

## Standard Features

- Reliable heat exchanger cooled, turbocharged, direct injection diesel engine, based upon Kubota's highly advanced technology.
- Very low lubricating oil consumption.
- Cast iron cylinder head and block with a gear driven camshaft and sea water pump.
- E-CDIS combustion system for quiet running, excellent fuel consumption, and emission compliance in all countries.
- Installation angles up to 15° maximum when static, and 25° when heeling.
- Technodrive or PRM gearboxes. Output rotation can be either left or right hand.

## Optional Extras

- Special engine feet to suit your installation requirements.
- 12 Volt - 120 or 175 Amp alternator; and second alternator available.
- Control Panels ABVW, B or C with gauges and alarms.
- See price list for a comprehensive range of accessories to cover a complete engine installation.

**BETA MARINE**

CANADA, QC.  
SOLUTION DIESEL - 514 268-7788  
Pierre-Valéry Boissé  
info@solutiondiesel.ca